

RESTAURANT FOR SALE

2,563 SF TURN KEY RESTAURANT SPACE

DOOKBAEKI KOREAN RESTAURANT WEM

8882 170 ST NW | Edmonton | AB



GABRIEL LORIEAU

Partner

780.222.4229

gabriel.lorieau@omada-cre.com

1400 Connect Tower

10020 101A Avenue, Edmonton, AB, T5J 3G2

780.540.5320 | OMADA-CRE.COM

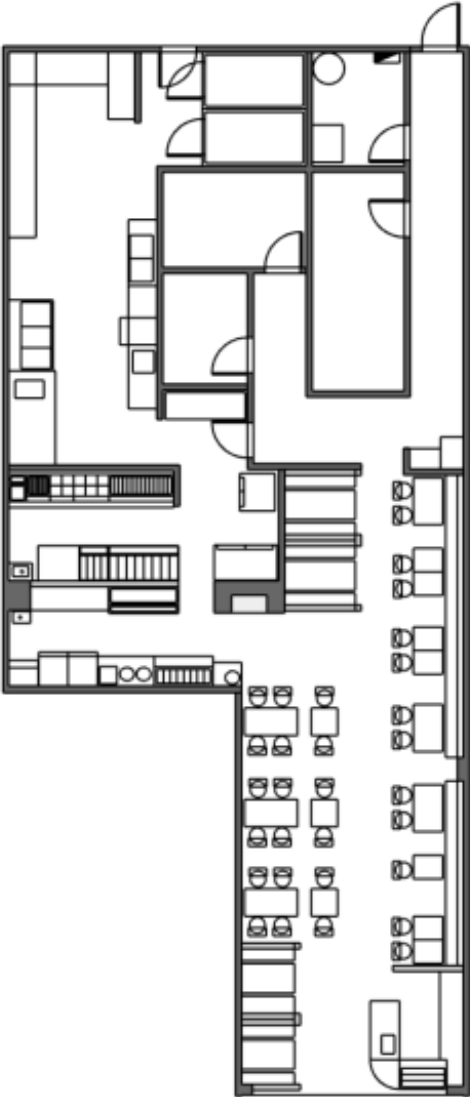
- Dookbaeki Korean restaurant is a turnkey restaurant opportunity in a very desirable location within West Edmonton Mall
- High end finishes throughout
- Excellent location next to T&T Supermarket
- High traffic area, West Edmonton Mall sees over 32 million visitors per year

PROPERTY FEATURES

Area	2,563 SF
Available	Immediately
Year Built	2022
Municipal	8882 170 Street, Edmonton
Sale Price	\$395,000.00
Parking	Ample parking
Capacity	62
Sales/Revenue	Available upon request



SPACE PLAN



HIGH TRAFFIC LOCATION



WEM SEES OVER 32 MILLION VISITORS PER YEAR



TURN KEY RESTAURANT

TURNKEY RESTAURANT SPACE IN PRIME WEST EDMONTON MALL LOCATION

Take advantage of this great opportunity to own and operate a restaurant in very desirable West Edmonton Mall! Dookbaeki Korean Restaurant is ready for you to take over as is with existing brand and equipment or convert to your own concept! This high end fixtured restaurant space comes with EVERYTHING making it an incredible turn-key operation with brand new finishes and kitchen equipment. This restaurant space is situated in a very desirable corridor next to T&T Supermarket, and is around the corner from luxury brands such as Louis Vuitton, Gucci, Yves St. Laurent, and more.

West Edmonton Mall sees over 32 million visitors annually with an estimated 90,000 shoppers visiting daily. On average, West Edmonton Mall businesses exceed sales of \$1,200 per square foot making it one of the top 25 performing malls in all of Canada.



KITCHEN EQUIPMENT

	Qty.	
COOLER	2	1-door beverage cooler
	1	2-sliding door showcase cooler
	2	2-sliding door cooler
	2	5' sandwich cooler
	1	27" sandwich cooler
	1	5' undercounter cooler
	1	2-door standing cooler
	1	walk-in cooler
FREEZER	1	3-door standing freezer
	1	walk-in freezer
GAS	1	14-burner gas stove
	1	4-burner gas stove
	1	6-burner gas stove with oven
	1	21" deep fryer
	3	stock pot stove

ELECTRIC	1	microwave
	1	hot water pot
	2	30-cup rice cooker
	1	6-cup rice cooker
	1	rice warmer
	1	ice maker
	1	dishwasher



DEMOGRAPHICS

2 KM RADIUS

76,055

DAYTIME POPULATION

55,199 residents

3.4% growth (2018-2024)

6.5 % projected growth (2024-2029)

36,752 Workforce Population

\$118,055

AVERAGE HOUSEHOLD INCOME

Total households 30,416

27.2% earn \$60-100,000

37.3% earn \$100,000+

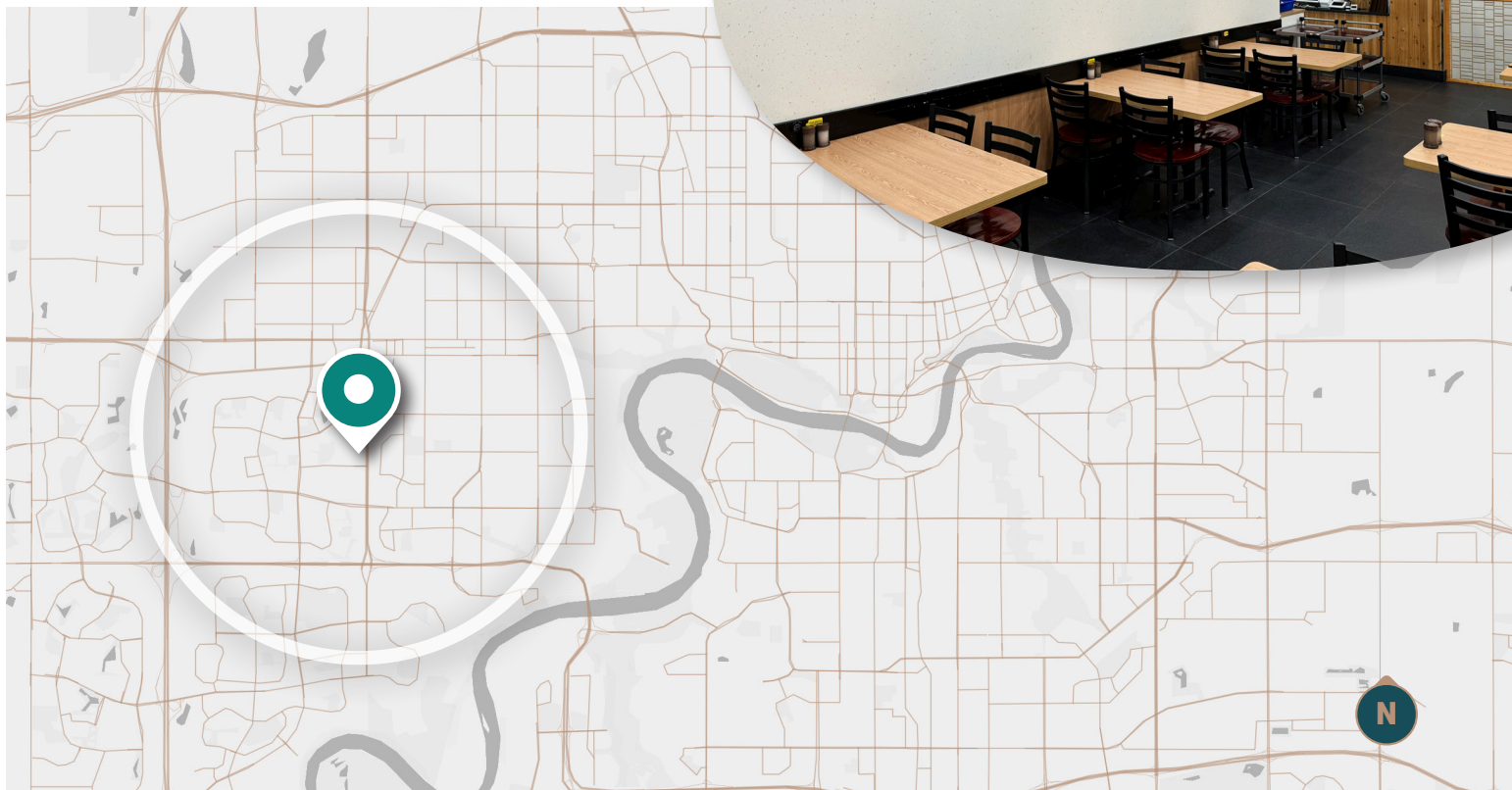
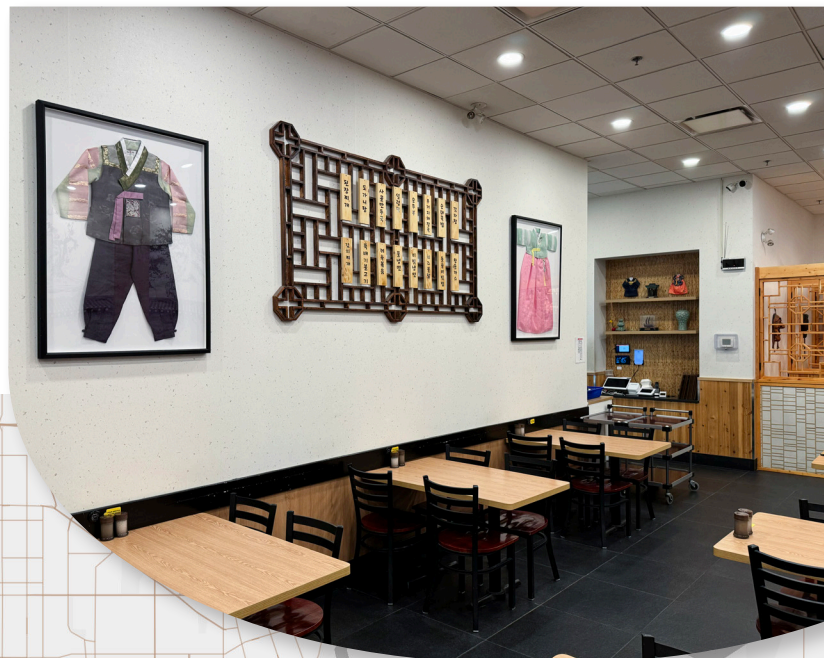
29.2%

20-39 YRS

0-19 yrs = 21.0%

40-59 yrs = 22.5%

60+ yrs = 24.4%



This disclaimer shall apply to Omada Commercial; to include all employees and independent contractors ("Omada"). The information contained herein was obtained from sources deemed to be reliable and is believed to be true; it has not been verified and as such, Omada does not represent, warrant or guarantee the accuracy, correctness and completeness of the information. April 8, 2025

OMADA-CRE.COM

780.540.5320

OMADA COMMERCIAL
1400 Connect Tower
10020 101A Ave, Edmonton, AB T5J 3G2

Omada
COMMERCIAL