

THE WORKLOFT

10420 122 STREET



"Design is the silent
ambassador of
your brand."

PAUL RAND

TABLE OF CONTENTS

- DESIGN PHILOSOPHY
- ABOUT THE WORKLOFT
- RESTORATION & DESIGN WORK
- LOCATION & DEMOGRAPHIC
- WORKSPACE 205
- MEET THE NEIGHBOURS



DESIGN PHILOSOPHY



PRINTING FACTORY LOFTS

THE ART OF LIVING

We push the limits of traditional design to create the best possible experiences.



MIDTOWN

MASTERS OF REIMAGINING

Never relying on past successes, we are always looking to do things differently, with consideration for aligning with the ever-evolving ways people live.



GREAT MINDS THINK TOGETHER

Our team approach is one of our most important differentiators, combining development, architecture, interior design, landscape and construction within a collaborative environment.

ABOUT

WHY

The intention of The WORKLOFT is to introduce the bold design of loft-style redevelopment and enhance the thriving west-end of Edmonton's downtown.

WHO

The WORKLOFT was created for those that are interested in participating in the evolution of this neighbourhood, as well as contributing to its growth and diversification.

RESULT

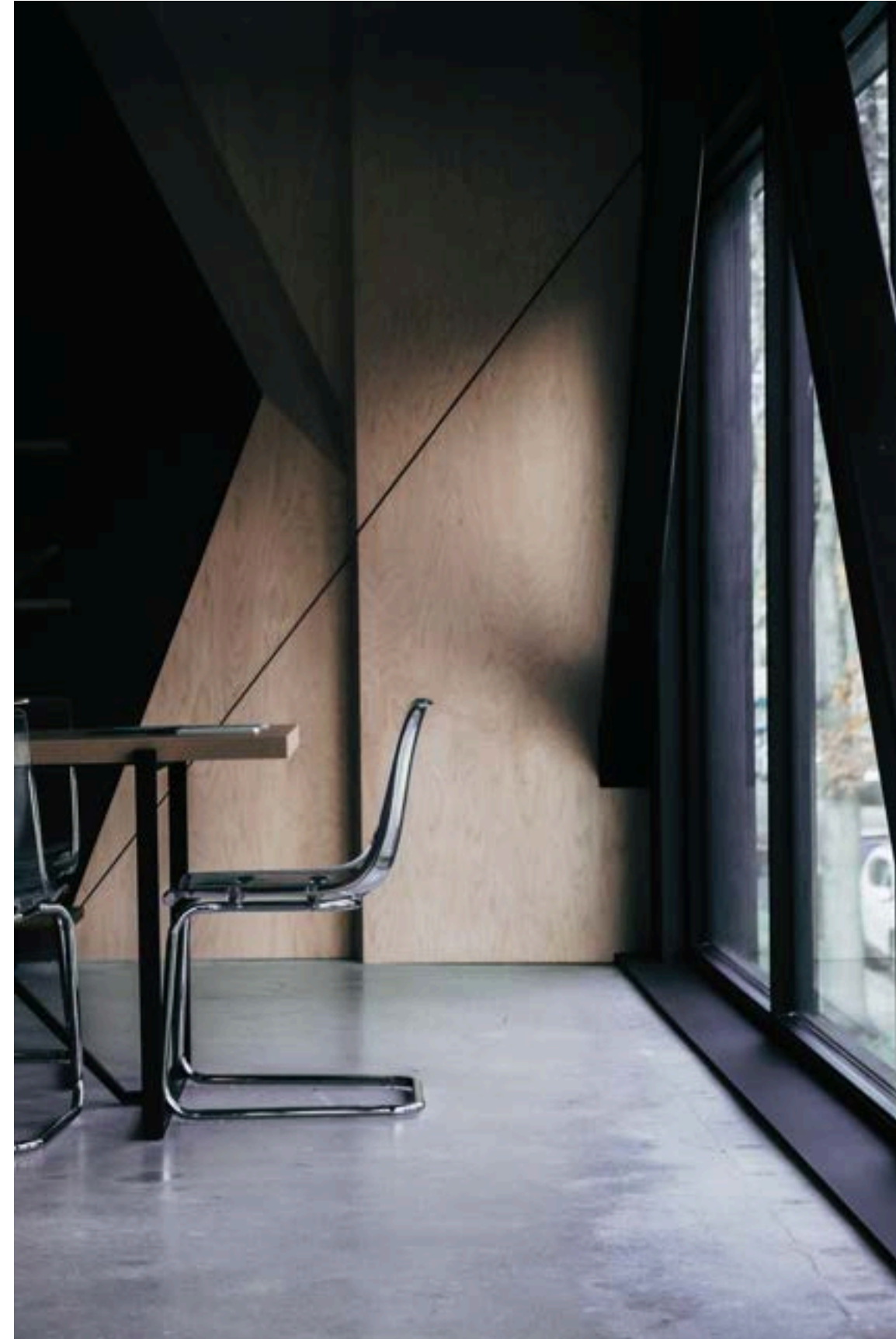
The WORKLOFT is a collection of makers and doers – those that see what others don't, and ultimately, those that value a bold design in a great location.



INNOVATION

MAKING A DIFFERENCE

We are passionate about applying creativity and imagination in all that we do. Our story is told by the thoughtfulness and texture of our designs and the fulfillment of those that experience the outcomes of our process every day.





“Architecture
should speak of its
time and place, but
yearn for
timelessness.”

FRANK GEHRY

RENEW

RENOVATION TIMELINE

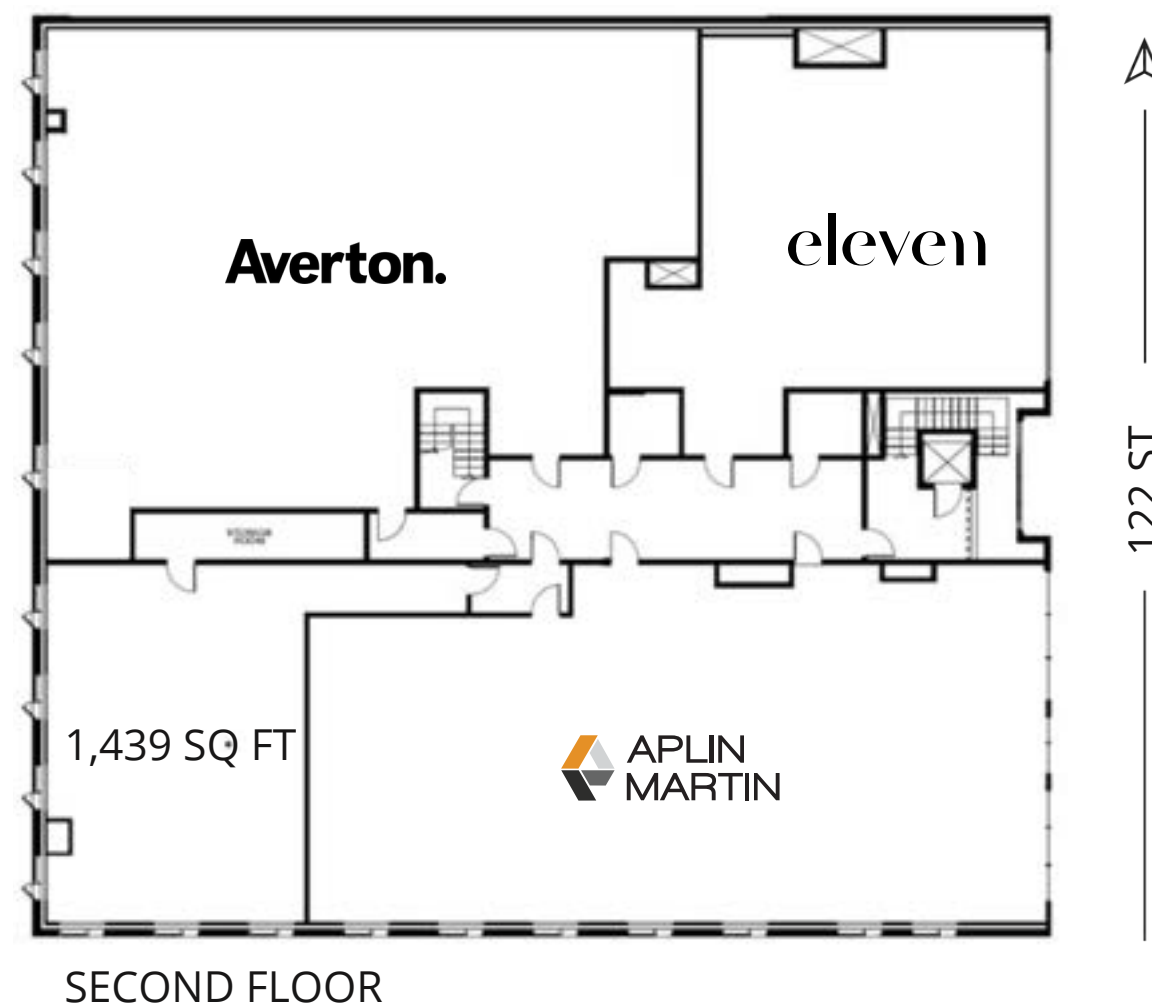
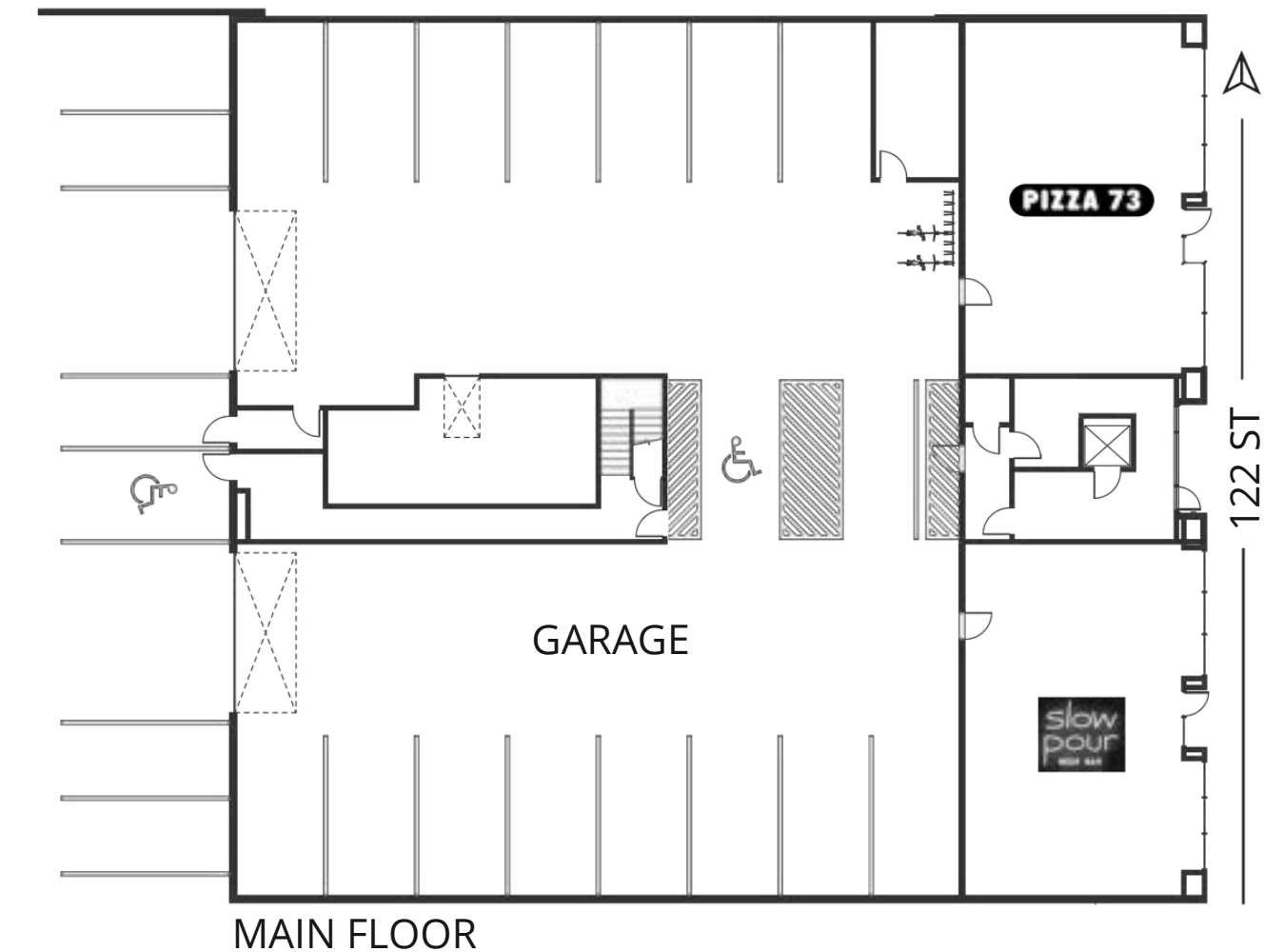
Extensive renovations have been completed on both the interior and exterior of The WORKLOFT. The bold new design has introduced street engagement to the main and second floors, creating a welcoming environment for all visitors.



DESIGN

INTERIOR PALETTE

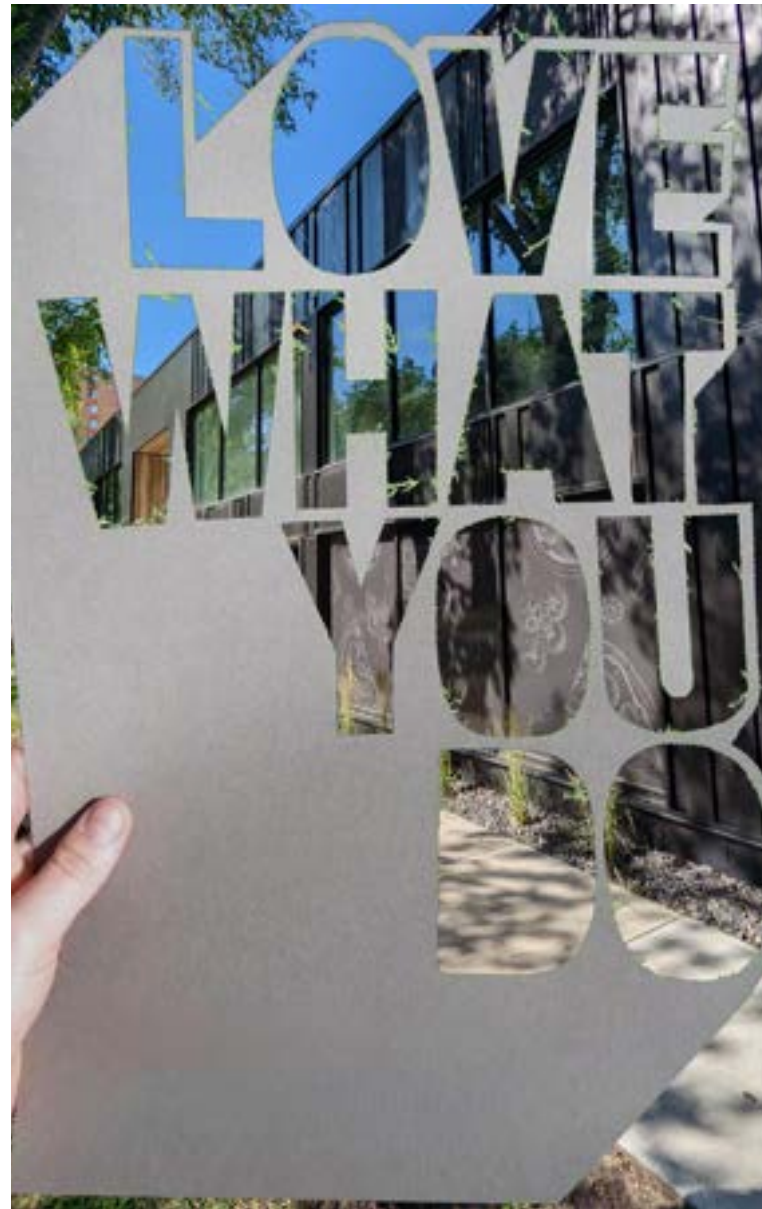
The WORKLOFT offers a modern colour palette of industrial concrete contrasting against sharp black finishes. Natural elements of wood and geometric accents compliment the overall design of the building.



DISCOVER

PROPERTY FEATURES

The WORKLOFT is ideally suited for a variety of specialty retail and high profile professional services.



POTENTIAL

Main Floor: Fully Leased
Second Floor: 1,384 SQ FT

Availability: Immediately

ACCESS

Stony Plain Road & 122 Street

Easy access for downtown
and westbound commuters

Steps to the future LRT stop

ADDRESS

Municipal: 10420 122 Street,
Edmonton, AB

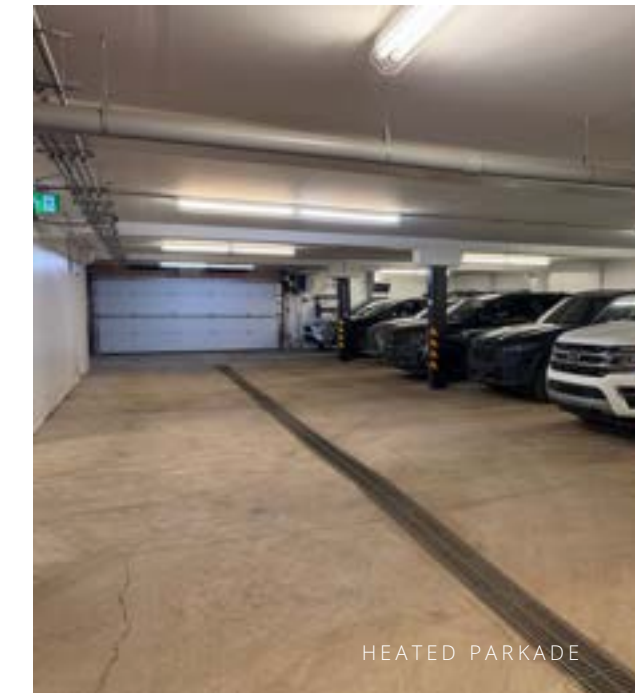
Legal: Lot 10, Block 9, Plan
RN22

Zoning: DC1 (18490) - Direct
Development Control
Provision

COSTS

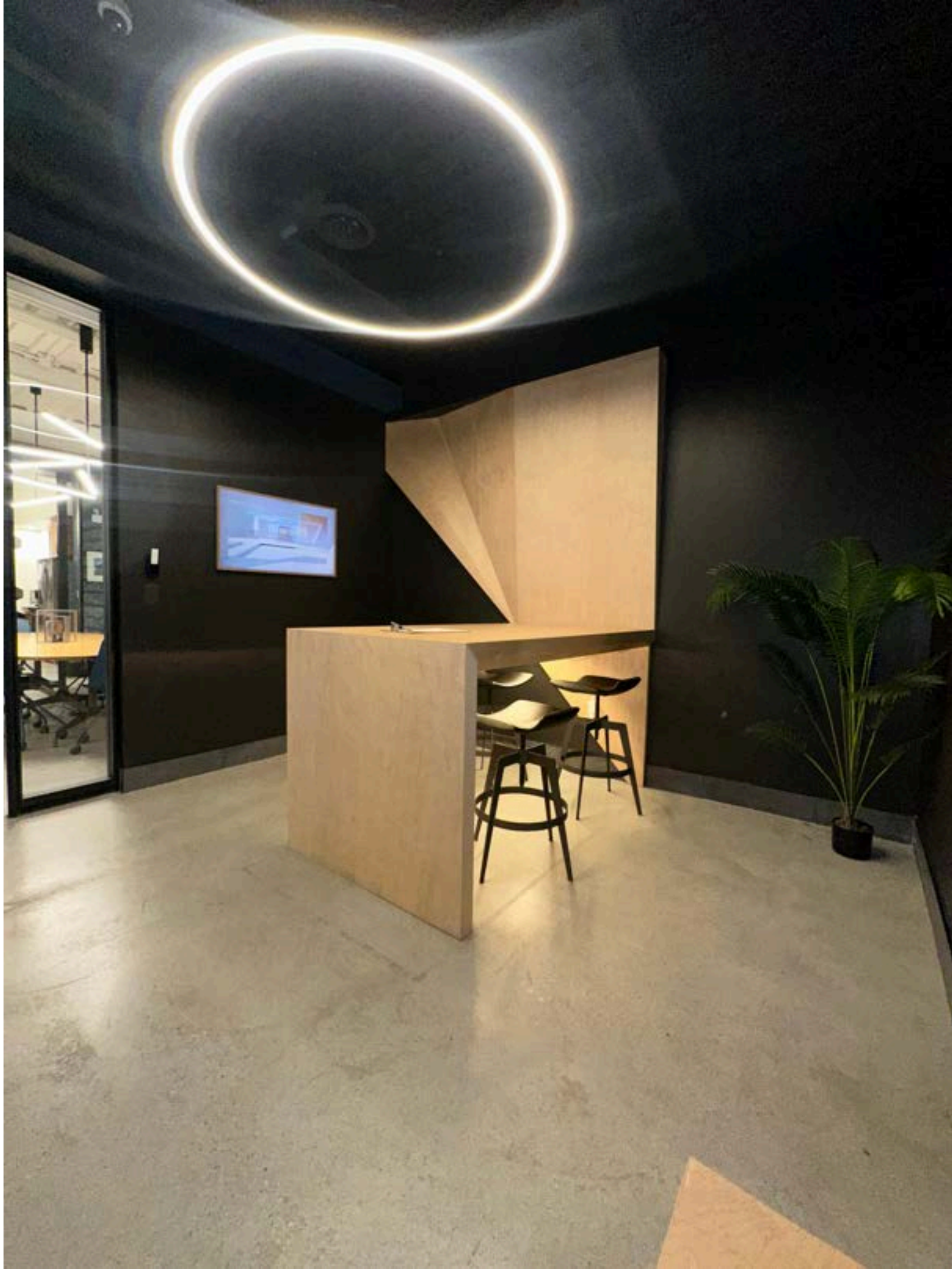
Affordable rental rates &
highly efficient building

Basic Rent: Negotiable
Op Costs: \$12.00 - \$14.00 PSF
(2025 est.)



PARKING

Indoor heated and outdoor
stalls available for lease,
subject to availability



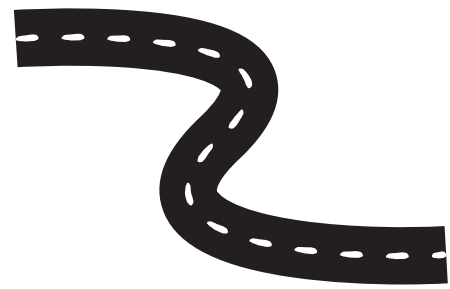
"But out of
limitations comes
creativity."

DEBBIE ALLEN

OPPORTUNITY

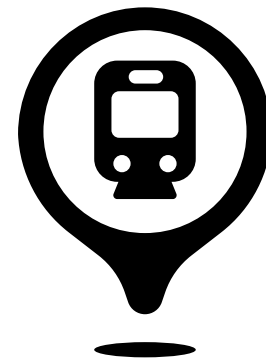
THE WORKLOFT IS SITUATED JUST OFF 104 AVENUE, ON 122 STREET

The WORKLOFT is surrounded by the neighbourhoods of Westmount and Oliver/Wîhkwêntôwin, which in the 2021 municipal census were reported to have 5,887 and 20,960 residents respectively. This is one of Edmonton's most densely populated neighbourhoods, and continues to grow with the addition of multiple new residential projects in the last year.



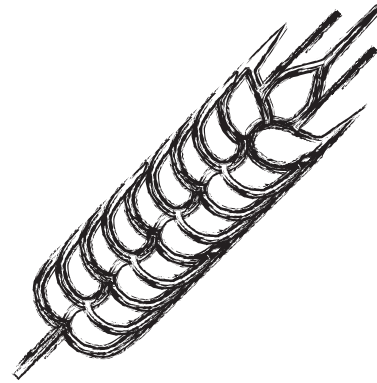
STONY PLAIN ROAD

Stony Plain Road branches into 104 Avenue and serves as a gateway to Downtown. This major arterial is an important commuter thoroughfare connecting communities in the east and west.



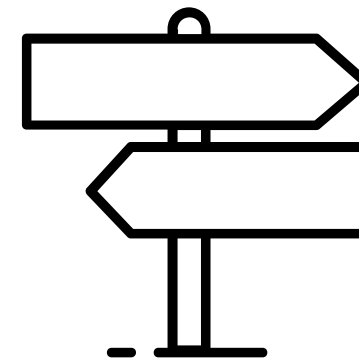
124 ST STATION

Steps away from the future Valley Line West 124 Street LRT station and access to downtown and the west end.



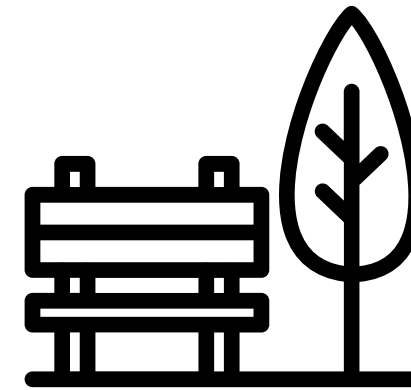
BREWERY DISTRICT

The Brewery District is a pedestrian-oriented commercial development where the architectural design is both historical and current.



124 STREET

Conveniently situated close to 124 Street's local restaurants, art galleries and shopping.



PAUL KANE PARK

Escape to Paul Kane Park, a mature and vibrant park nestled in the heart of a vibrant neighbourhood.

OPPORTUNITY

SURROUNDING RESIDENTIAL



THE WORKLOFT is positioned near several major residential developments, with over 500 units currently under construction and thousands of additional units at various stages of approval within a 5 minute walk.

THE WORKLOFT is steps from the established amenities found in the Westmount and Oliver neighbourhoods. These areas are the most walkable areas of our city, with strong commercial elements threaded throughout. With all the advantages that a mature neighbourhood offers, it's no surprise that these areas are some of the most densely populated in Edmonton, with over 20,000 residents in Oliver alone.

- | | |
|--------------------------------------------|----------------------------|
| — Hat @ 122
134 units | — The Edward
161 Units |
| — Cobalt
166 Units (Under Construction) | — The Citizen
345 Units |
| — Mercury Block
163 Units | — The Leston
94 Units |

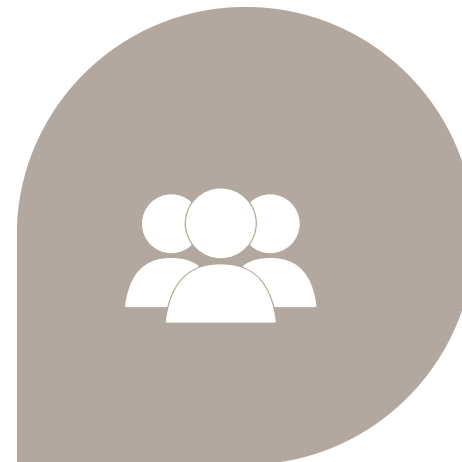
DEMOGRAPHICS

2KM RADIUS

POPULATION

58,447 DAYTIME POPULATION
103,480 WORKFORCE POPULATION

- 51,540 residents
- 8.3% growth (2016-2021)
- 14.1% projected growth (2022-2027)



INCOME

AVERAGE HOUSEHOLD INCOME OF
\$99,387

- 26.0% of households earn \$60,000 to \$100,000
- 31.3% of households earn more than \$100,000



AGE

A majority of the population being 20-39 years old.

- 0-19 yrs = 11.4%
- 20-39 YRS= 43%
- 40-59 yrs = 24%
- 60+ yrs = 21.6%

VEHICLES PER DAY

- 21,600 VPD on Stony Plain Road
- 19,900 VPD on 124 Street North of Jasper Avenue



DESIGN

DESIGN CONCEPT FOR
SUITE 205



SECOND FLOOR



Simplicity is the
ultimate
sophistication.”

LEONARDO DA VINCI

MEET THE NEIGHBOURS



PIZZA 73
Pizzeria



SLOW POUR
Specialty Craft Beer Bar



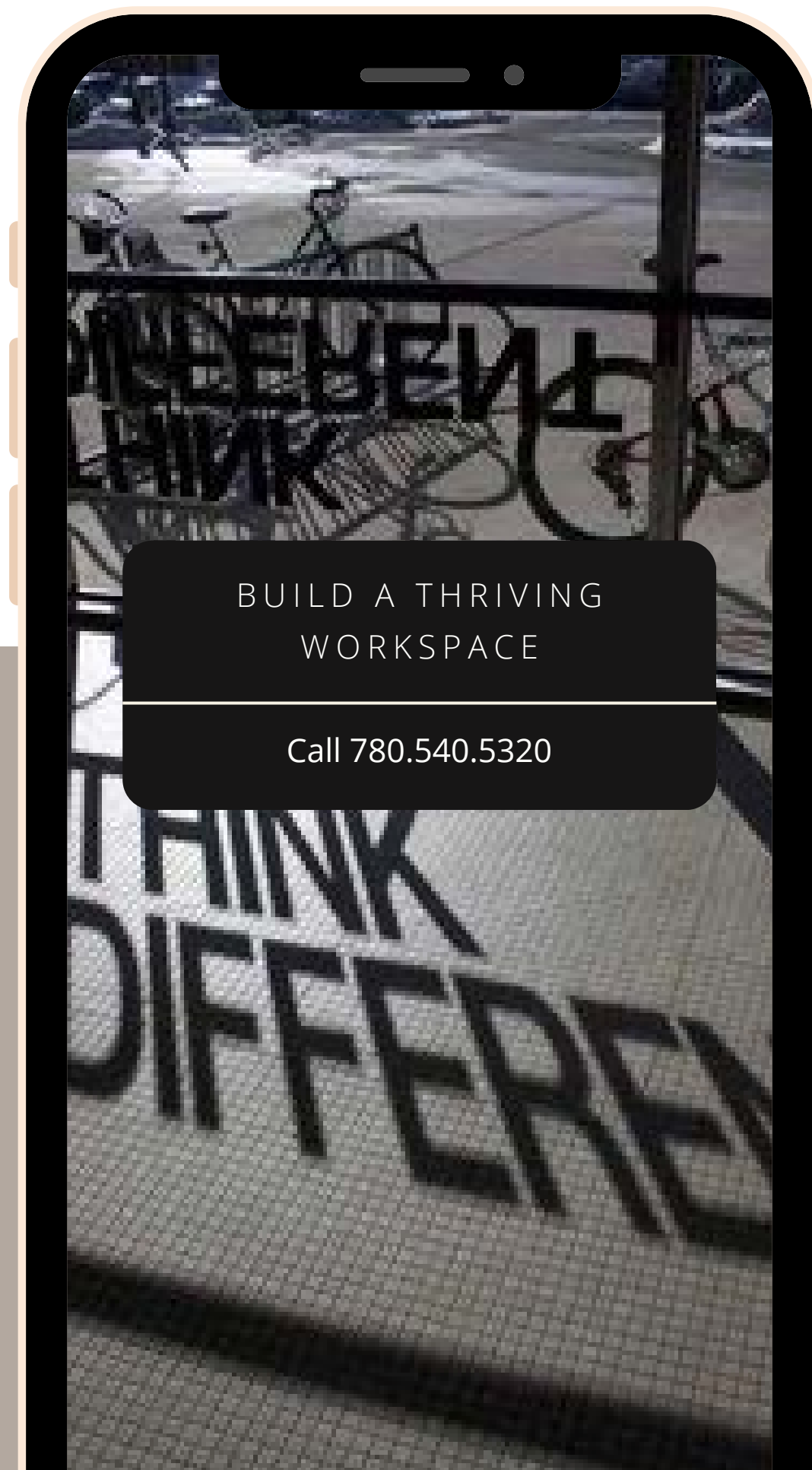
ELEVEN ARCHITECTS
Architecture Firm



APLIN MARTIN
Consulting Firm



AVERTON
Builder & Developer





BUILD A THRIVING
WORKSPACE

Call 780.540.5320




GET IN TOUCH

FOR BUILDING INQUIRIES
PLEASE CONTACT

GABRIEL LORIEAU

 Partner
780.222.4229
 gabriel.lorieau@omada-cre.com

OMADA COMMERCIAL

 omada-cre.com
 780.540.5320
 Connect Tower
McKinnon, 10020 101A Avenue
#1400, Edmonton, AB T5J 3G2

BROKERS PROTECTED