

PARKLAND LAND

52423 RANGE ROAD 270 | PARKLAND COUNTY | AB

**5.04 ACRE
FENCED LAND**



IDEAL FOR STORAGE



IDEAL FOR HOME & INDUSTRIAL SHOP



HIGHLIGHTS

- **5.04 ACRE FULLY FENCED LAND**
- Electricity pulled into the site
- Well located with easy access to Hwy 16A

BRONWYN SCRIVENS
Associate Broker
780.540.5331
bronwyn.scrivens@omada-cre.com

KENT SIMPSON
Associate
780.540.5330
kent.simpson@omada-cre.com

OMADA COMMERCIAL
1400 Phipps-McKinnon Building
10020 101A Ave, Edmonton AB T5J 3G2
780.540.5320 | omada-cre.com



780.540.5320

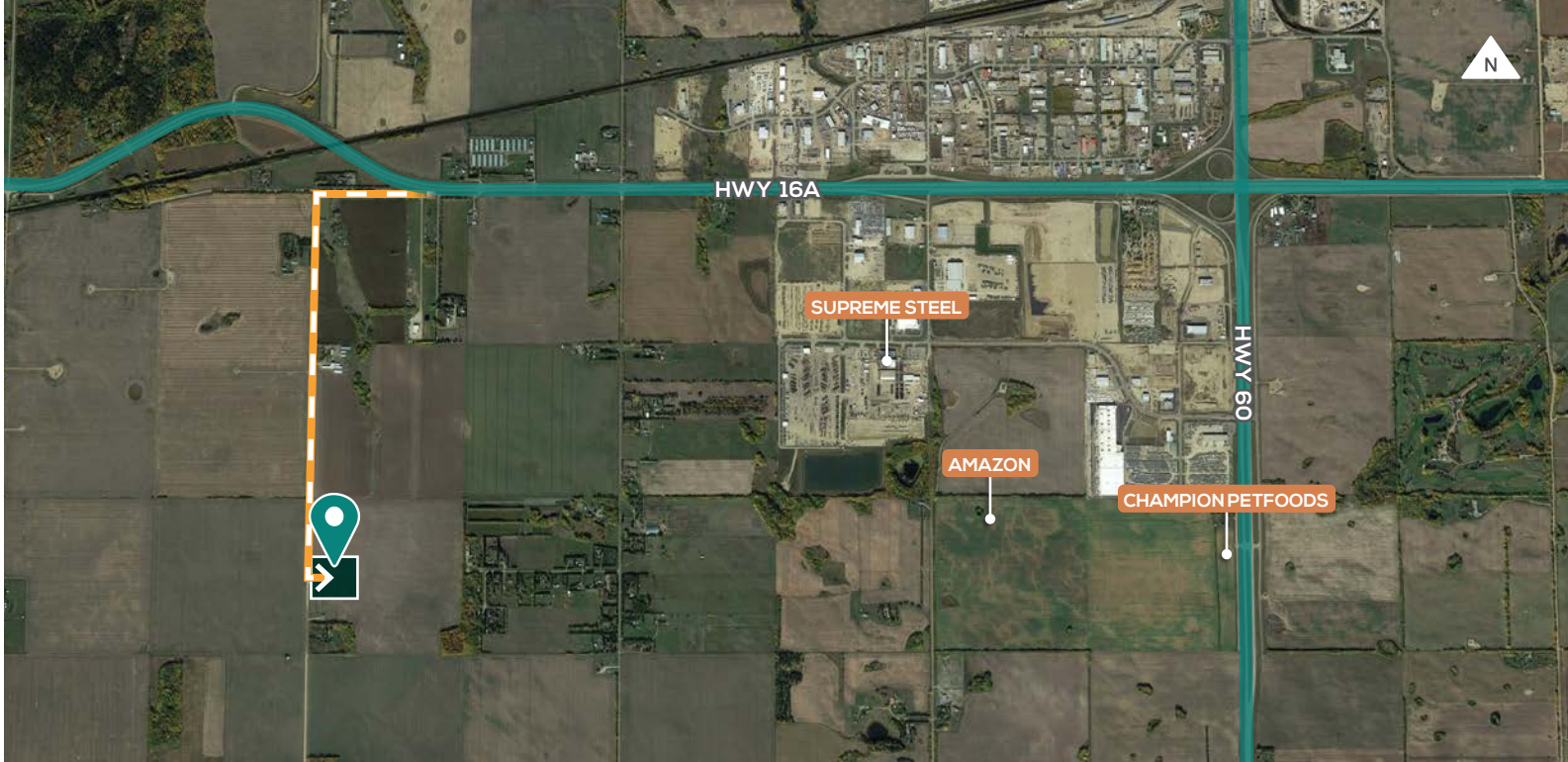


OMADA-CRE.COM

PARKLAND LAND

52423 RANGE ROAD 270 | PARKLAND COUNTY | AB

5.04 ACRE
FENCED LAND



FEATURES

- **Size:** 5.04 Acres
- **Municipal:** 52423 Range Road 270, Parkland County
- **Legal:** Plan 1520701; Block 1; Lot 1
- **Zoning:** AGG – Agriculture General District
- **Asking Price:** \$350,000.00
- **Prop. Taxes:** \$1,877.40 (2022)
- **Yard Details:** Fully fenced and electricity pulled to the property

BRONWYN SCRIVENS
Associate Broker
780.540.5331
bronwyn.scrivens@omada-cre.com

KENT SIMPSON
Associate
780.540.5330
kent.simpson@omada-cre.com

OMADA COMMERCIAL
1400 Phipps-McKinnon Building
10020 101A Ave, Edmonton AB T5J 3G2
780.540.5320 | omada-cre.com

780.540.5320

OMADA-CRE.COM

This disclaimer shall apply to Omada Commercial; to include all employees and independent contractors ("Omada").

The information contained herein was obtained from sources deemed to be reliable and is believed to be true; it has not been verified and as such, Omada does not represent, warrant or guarantee the accuracy, correctness and completeness of the information. 220719